



One Swallow Street, Birmingham, B1 2AP

- Available immediately
- 1 bathroom
- 3rd floor
- City centre location
- Managed by Smart Living
- Studio apartment
- Fully furnished
- Secure bicycle store
- Overlooking New Street Station

RENT ME
£900 PCM
(+ admin fees)

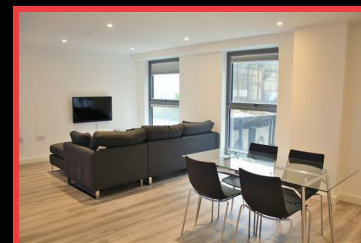
FleetMilne Property are pleased to present this fantastic, open-plan studio apartment, in the extremely sought after One Swallow Street development. The apartment is fully furnished to an excellent standard and has generous storage space built in. The apartment features a wall-mounted television in the living room, and spacious shower room. The integrated kitchen includes a full height fridge/freezer, slimline dishwasher and microwave; the washer/dryer is neatly tucked into a large separate cupboard. The grey and white decor throughout the apartment gives a real feel of modern city living, and is complemented by numerous windows offering an abundance of natural light. The building also benefits from a large and secure bicycle store on the ground floor.

The building is situated 200m from the tram network and the entrance to Grand Central (New Street train station) and 300m from the main entrance to John Lewis and the Mailbox.

Viewings can usually be arranged with 24 hours notice. This property is managed by Smart Living. Administration fees apply.

The rental amount quoted includes an active broadband connection of up to 24MB download, which is subject to a fair usage policy. All residents will pay electricity and water costs (metered) direct to Smart Living.

EPC Rating-D



Speak to the lettings team

T: 0121 366 0456

E: property@fleetmilne.co.uk

FLEETMILNE
PROPERTY